



THE **OUTDOOR** PLUS



CALIFORNIA PROP 65 WARNING

This product can expose you to chemicals including Lead and Lead Compounds, which are known to the state of California to cause cancer, and Carbon Monoxide, Lead and Lead Compounds which are known to the state of California to cause birth defects or other reproductive harm. For more information go to www.P65Warnings.ca.gov.

CONCRETE REPAIR MANUAL

CONCRETE REPAIR MANUAL

YOU WILL BE PROVIDED ONE JAR OF YOUR SPECIFIED COLOR CONCRETE MIX AND ONE SEALER SPRAY.

REPAIRING THE CONCRETE

MATERIALS NEEDED

Concrete Mix, Water, Sealer, Soft Brush, Clean Cloth, Clean Sponge and a Plastic Spatula or Putty Knife.



STEP 1

Clean surface of the damaged area by removing any loose material (Dirt, Oil, Grease or any loose/flaking concrete). *See Figure 1 & 2.*



FIGURE 1



FIGURE 2

STEP 2

Thoroughly mix concrete with water. (Mix should be a lump free and have a putty consistency). *See Figure 3.*



FIGURE 3

STEP 3

With a plastic putty knife, apply concrete mix to damaged area. Apply enough pressure to fill in any gaps and to prevent air bubbles beneath the surface. (metal tools may damage and scratch the surface of the unit). *See Figure 3 & 4.*



FIGURE 4

STEP 4

Once filled, remove excess concrete and smooth out to match the shape of the unit. As concrete begins to dry, you will be able to finely smooth it down, getting a more accurate, matching form. *See Figure 5.*

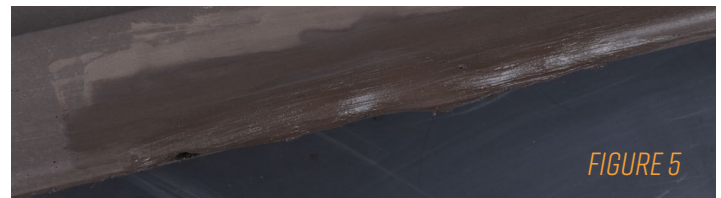


FIGURE 5

STEP 5

To remove excess concrete, with a damp sponge or rag, firmly wipe away the surrounding area, avoiding the newly filled area. *See Figure 6.*



FIGURE 6

STEP 6

Let concrete dry for at least 24 hours before applying sealer. *See Figure 7.*



FIGURE 7

CONCRETE REPAIR MANUAL

PLEASE FOLLOW THESE INSTRUCTIONS CAREFULLY TO AVOID IMPROPER REPAIR.

APPLYING THE SEALANT

STEP 1

Clean the area with a damp rag, remove any dirt or dust. Let area completely dry before applying the sealer.

STEP 2

Attach the jar of sealer to the power unit of the PREVAL® Spray System. Align the red insert found in [Figure 8.1](#) to the opposite of the air vent found in [Figure 8.2](#) on coupler. Never shake the sealer container once it has been attached to the power unit.

STEP 3

Spray for 15 seconds to prime valve with product. If after 15 seconds it starts spraying, there is no need to back flush. If spraying, it is primed.

STEP 4

Practice spraying - Practice on a piece of cardboard if you have never used a PREVAL® sprayer. Start spraying with the sprayer in motion and release the button while the sprayer is still moving at the end of the stroke to avoid runs. Hold the sprayer upright, 6" to 10" from the surface being sprayed. If you are too close to the surface, Sealer will build up too quickly and will run. If you are too far from the surface, the sealer will dry before it reaches the surface and dimpling will result. Keep the sprayer moving constantly.

For best results apply 2 or more thin coats as opposed to 1 thick coat. If the PREVAL® power unit becomes too cold from continuous spraying, you may see sputtering or a decrease in power. Let the unit rest until it reaches room temperature before trying to spray again. If this does not work, wrap the unit with a warm towel to continue spraying.

NOTE

The PREVAL® power unit is vented. Do not tip beyond 45° or liquid will run out the air vent preventing efficient performance. Never shake the power unit. [See Figure 9.](#)

NOTE

Initially, the repaired area will look discolored due to wet concrete and sealer. As it dries, the color will begin to match the surrounding area.

